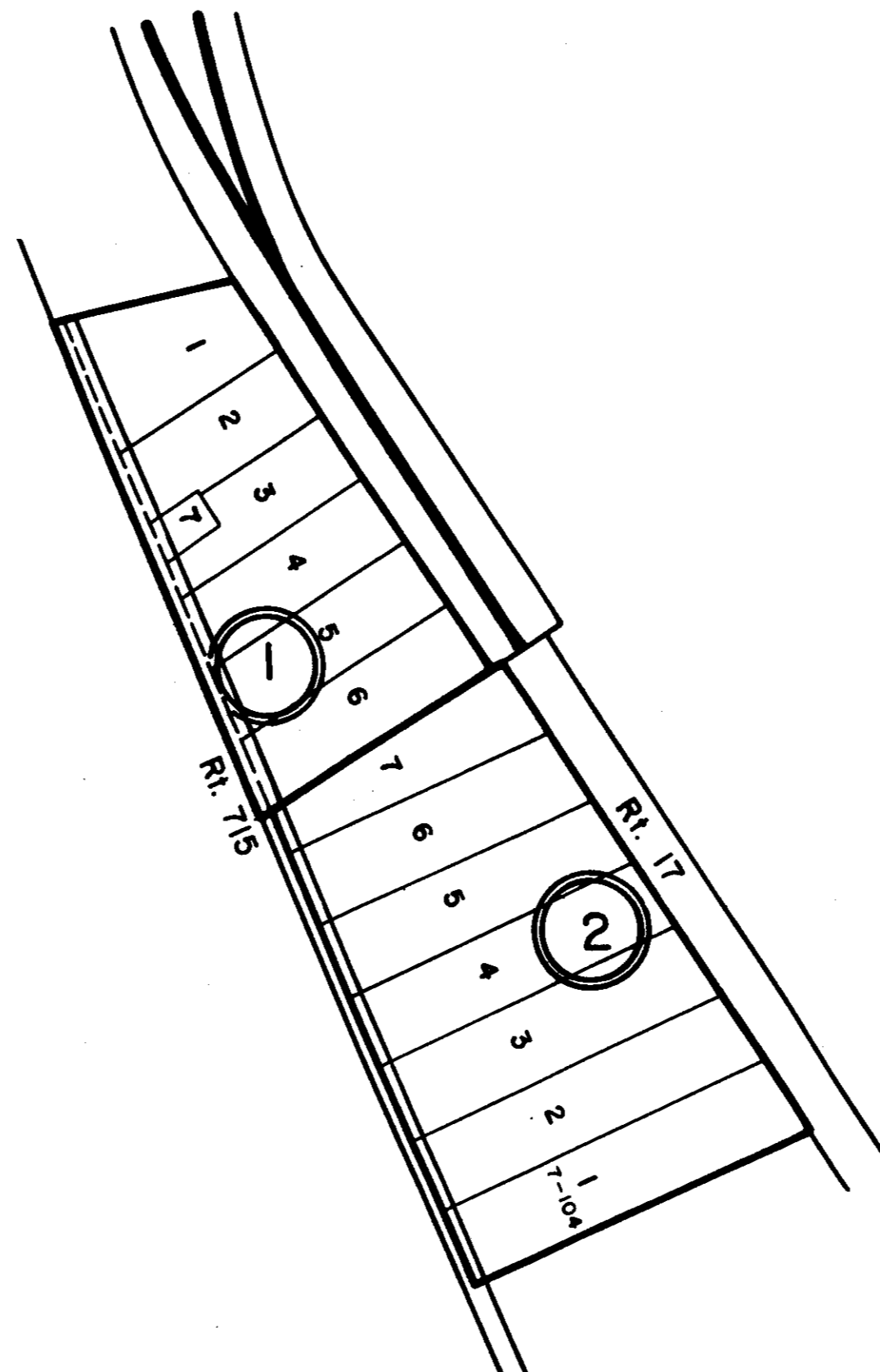


ESSEX COUNTY



- ① LAKELAND PLACE - P. B. 6, Pg. 13
- ② W.B. WATSON SUBDIVISION - D. B. 96, Pg. 310

REV. '65, 1/66, 1/82, 7/95, 12/00

SCALE IN FEET



CENTRAL DISTRICT

SECTION INSERT 37B

VIRGINIA STATE DEPARTMENT OF TAXATION, DIVISION OF REAL ESTATE APPRAISAL AND MAPPING