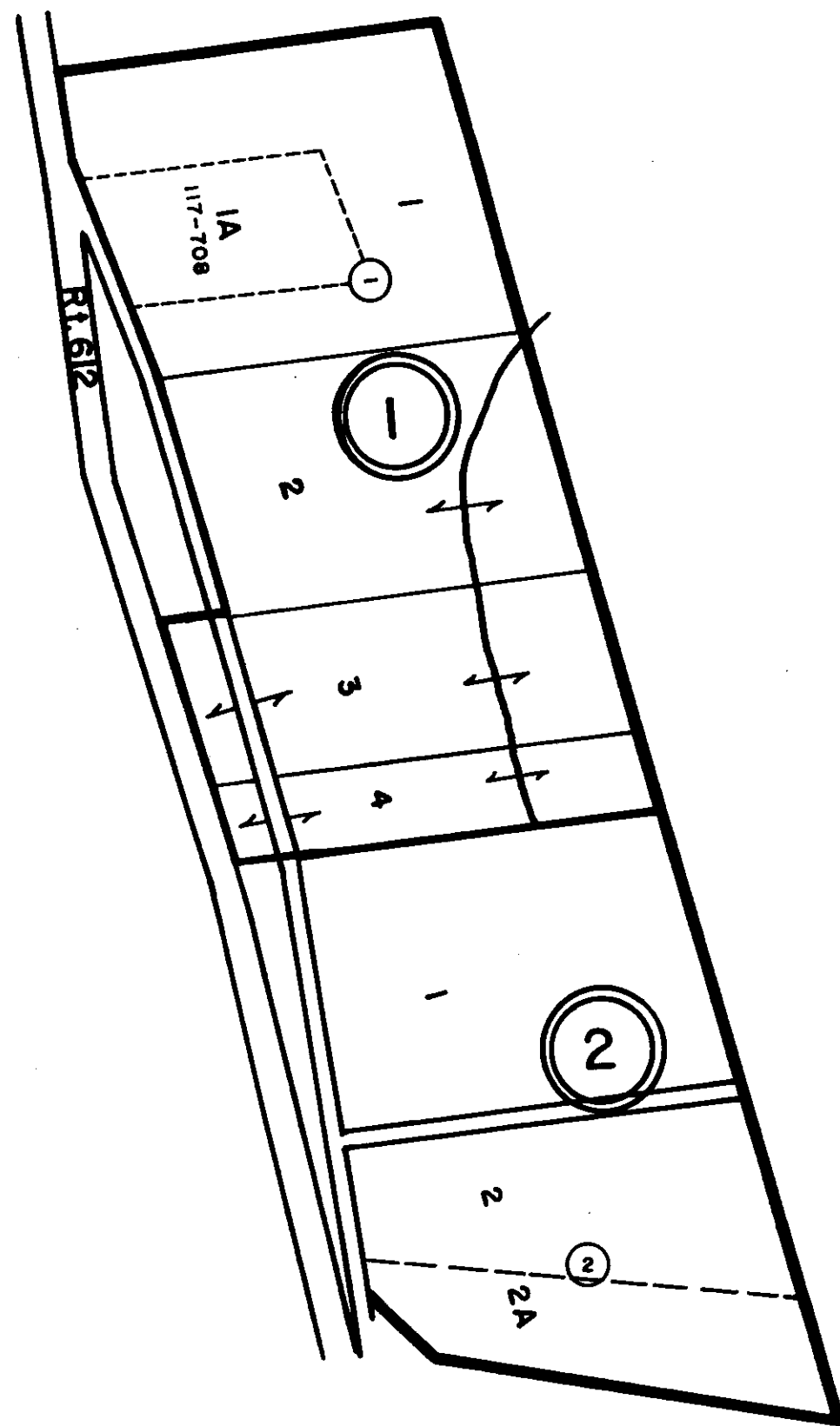


ESSEX COUNTY



- ① GORDON LEWIS SUBDIVISION-P.B.5, Pg.21
- ② P.B.5, Pg.32 - BURNETT -ROBINSON SURVEY

REV. 65,1/66, 1/82, 7/95, 12/00
SCALE IN FEET



RAPPAHANNOCK DISTRICT

VIRGINIA STATE DEPARTMENT OF TAXATION, DIVISION OF REAL ESTATE APPRAISAL AND MAPPING

SECTION _____
INSERT 50C