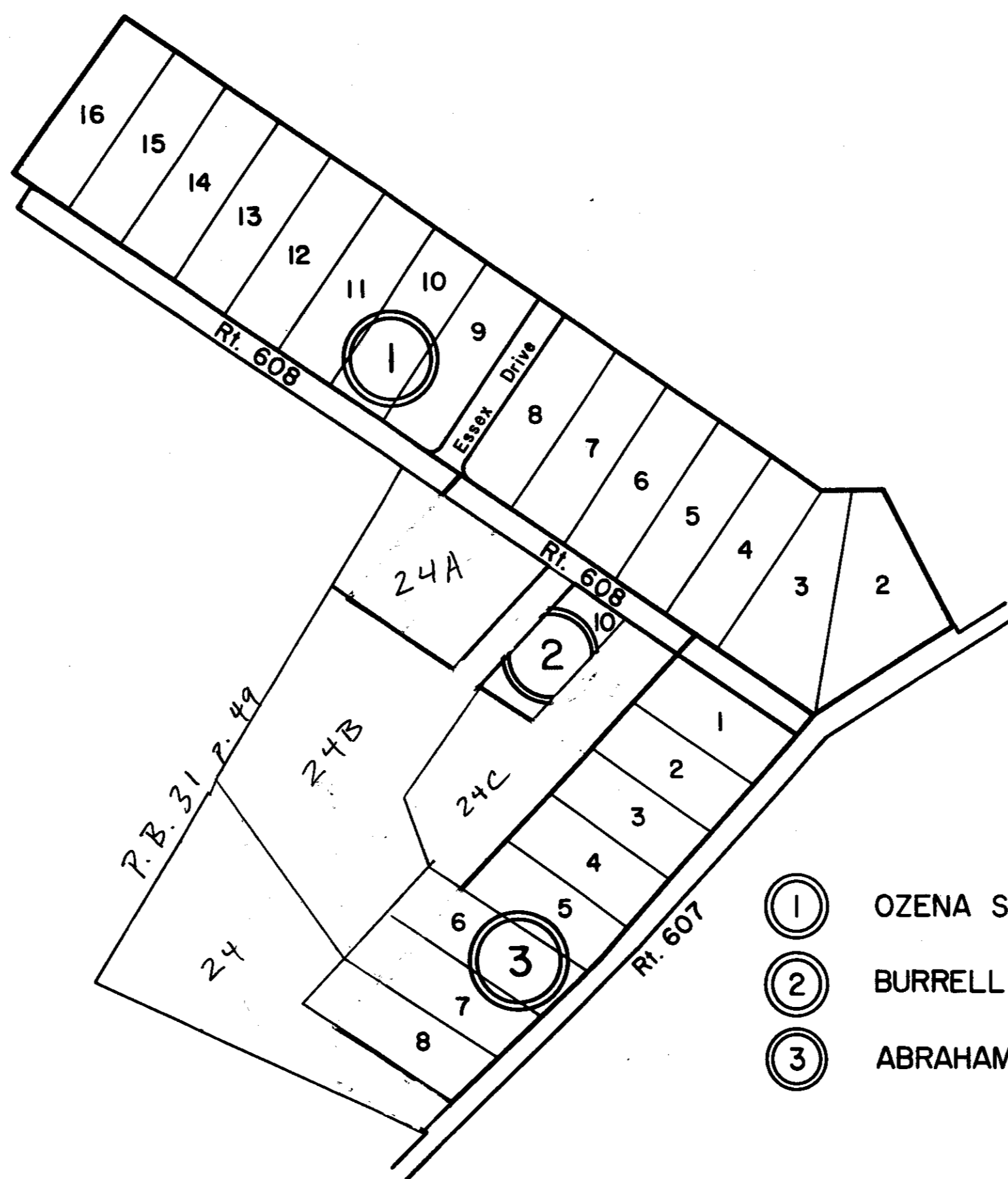
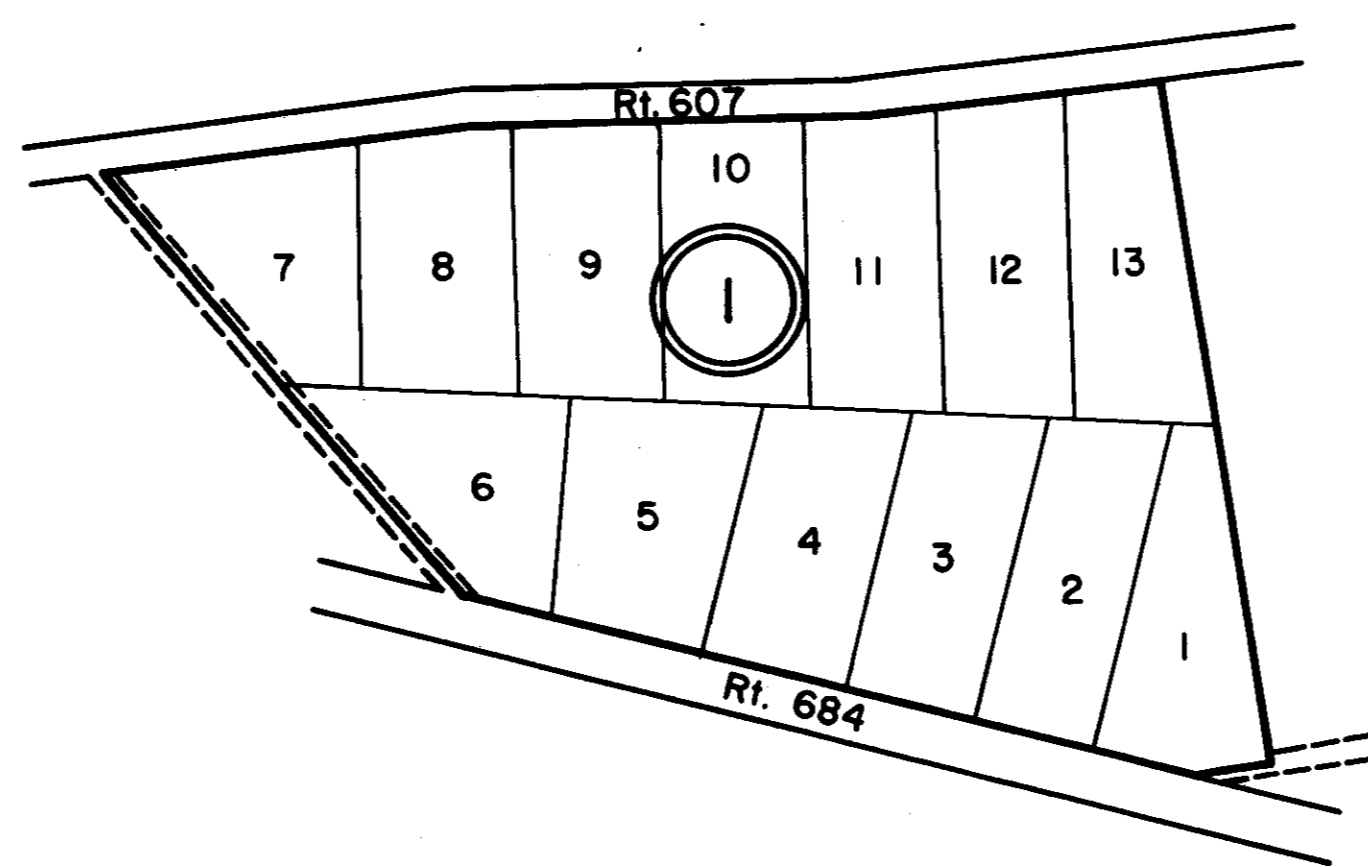


ESSEX COUNTY



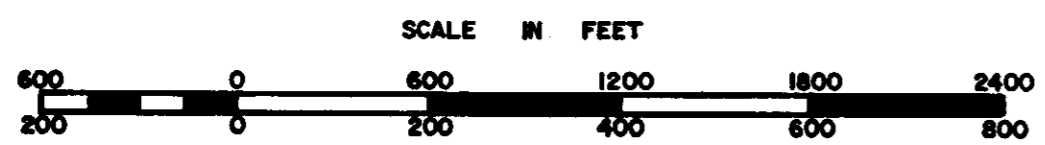
- ① OZENA SUBDIVISION- P.B. 13, Pg. 31
- ② BURRELL SUBDIVISION-P.B. 10, Pg. 11
- ③ ABRAHAM, BURRELL & GEORGE GUY, JR.-P.B. 11, Pg. 4

52C



- ① JOHN M. BAREFORD, SR. SUBDIVISION-P.B. 11, Pg. 1

52B



CENTRAL DISTRICT

SECTION INSERT 52B&C