

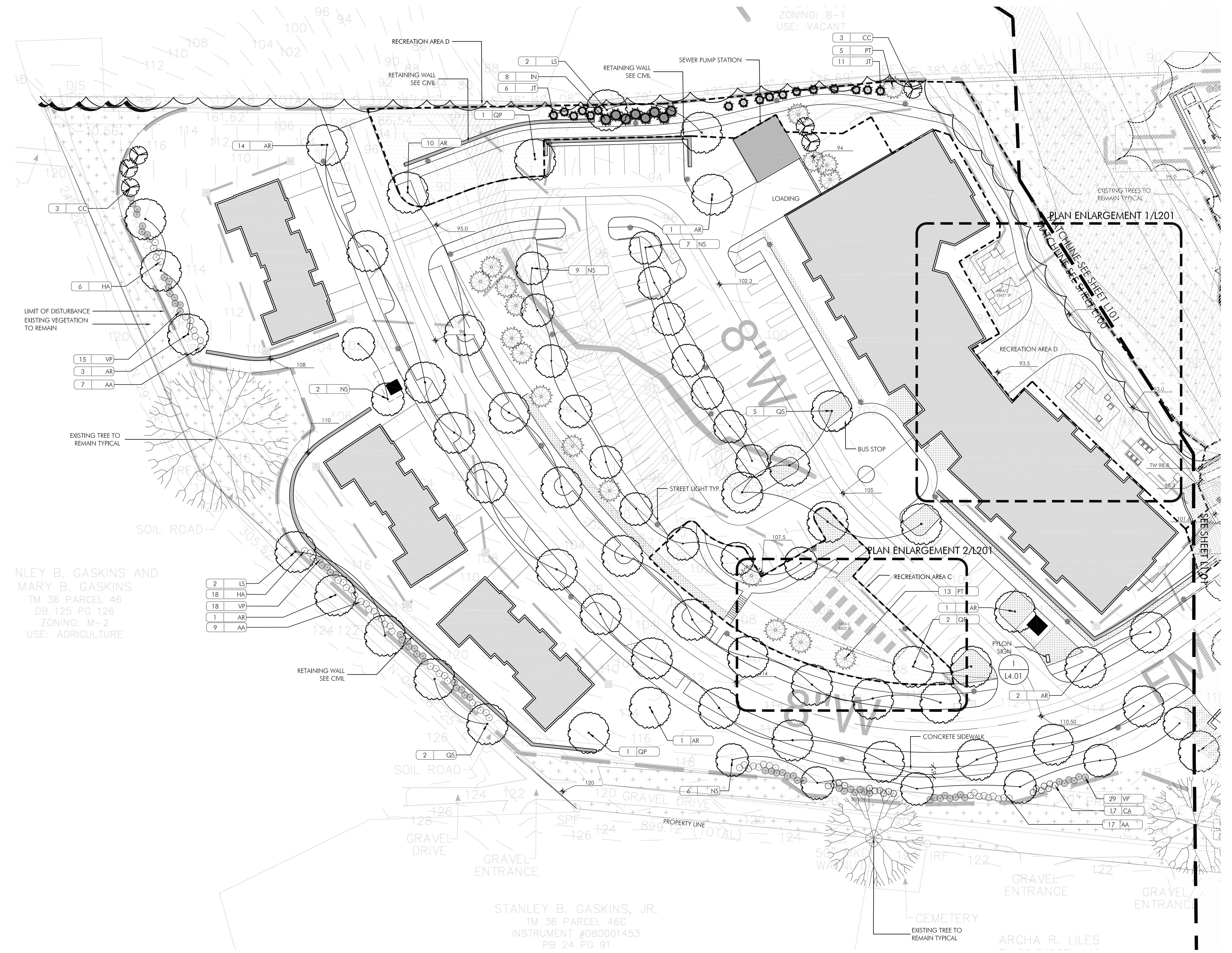
- RECREATION USES**  
1.39 ACRES TOTAL
- AREA A PLAZA 0.18 ACRES**
    - SEATING
    - FOUNTAIN OR SCULPTURE VIEWING
    - OUTDOOR DINING
  - AREA B COMMUNITY CENTER PLAZA 0.47 ACRES**
    - SEATING
    - GATHERING
    - OPPORTUNITY FOR MARKET TENTS
    - OVERLOOK
  - AREA C COMMUNITY GARDEN 0.20 ACRES**
    - GARDEN PLOTS
    - SEATING
  - AREA D TRAIL AND GARDENS 0.54 ACRES**
    - WALKING PATH
    - SEATING
    - SPECIAL PLANTING

DESIGNED BY  
DA  
DRAWN BY  
BC  
CHECKED BY

REVISIONS

SITE PLAN SUBMISSION	12.30.2022
SITE PLAN RESUBMISSION	02.24.2023

LANDSCAPE  
PLAN



NLEY B. GASKINS AND  
MARY B. GASKINS  
TM 36 PARCEL 46  
DB 125 PG 126  
ZONING: M-2  
USE: AGRICULTURE

- 2 LS
- 18 HA
- 18 VP
- 1 AR
- 9 AA

STANLEY B. GASKINS, JR.  
TM 36 PARCEL 46C  
INSTRUMENT #080001453  
PB 24 PG 91



- LEGEND**
- PROPOSED TREE
  - PROPOSED SHRUBS
  - PLANT BED WITH MIX OF SHRUBS PERENNIALS, GRASSES AND GROUNDCOVER
  - EXISTING TREES AND VEGETATION TO REMAIN
  - RECREATION SPACE
  - STREET LIGHT
  - POLE MOUNTED FLOOD LIGHT
  - WALL LIGHT



Essex County, VA  
LANDSCAPE ARCHITECT  
**ParkerRodriguez**  
101 North Union Street, Suite 320  
Alexandria VA 22314  
703.548.5010

OWNER  
7 and M Development, LLC  
23263 Tidewater Trail  
Tappahannock, VA 22560

ARCHITECT  
MEASURE ARCHITECTS  
4000 Tullow Rd., NW Suite 922  
Washington, DC 20007  
202.810.4281

ARCHITECT  
GTM  
7735 Old Georgetown Rd  
Bethesda, MD 20814

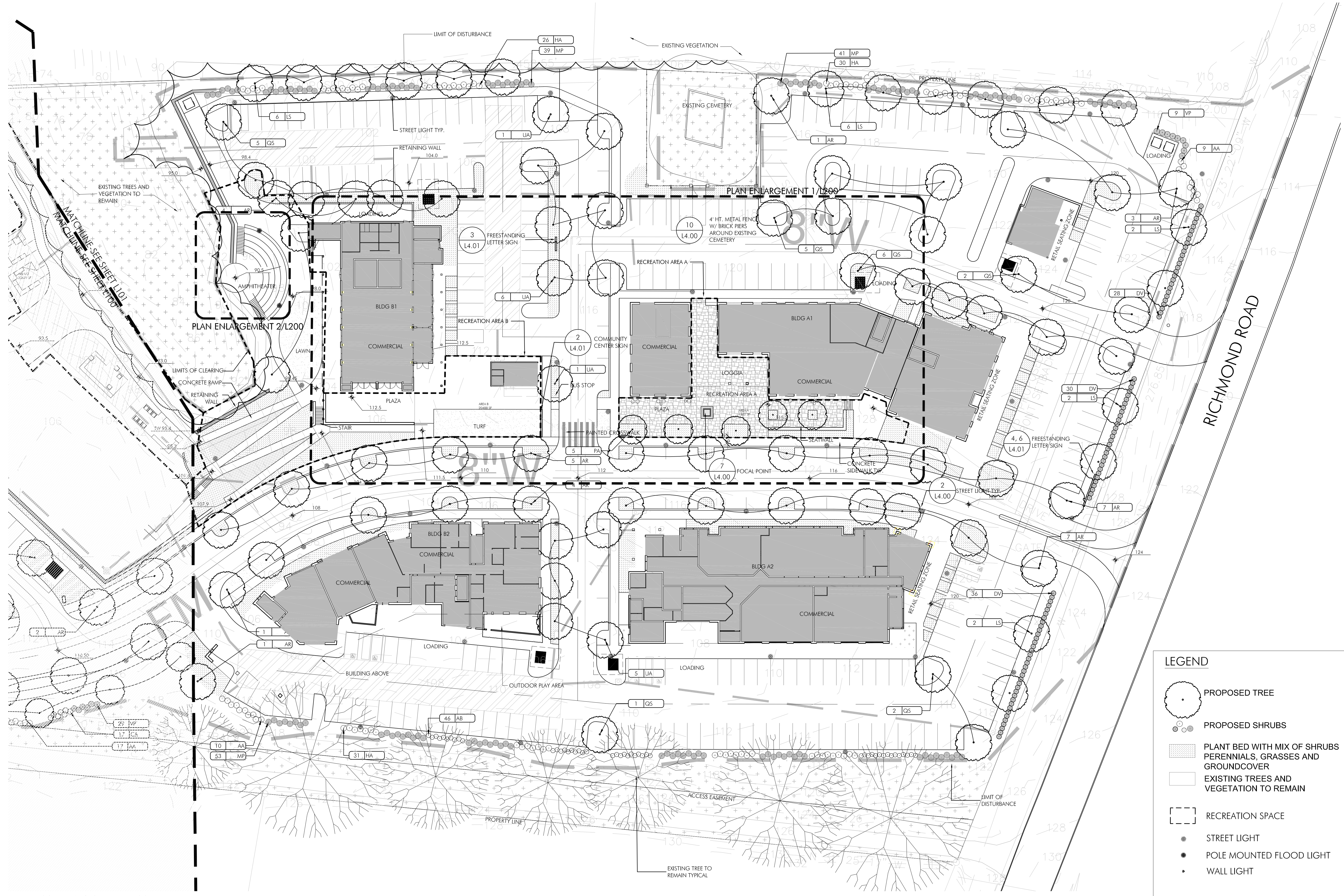
CIVIL ENGINEER  
Timmons Group  
1001 Boulders Parkway  
Richmond VA 23225  
804.200.6400

DESIGNED BY  
DA  
DRAWN BY  
BC  
CHECKED BY

REVISIONS  
SITE PLAN SUBMISSION 12.30.2022  
SITE PLAN RESUBMISSION 02.24.2023

LANDSCAPE  
PLAN

L101



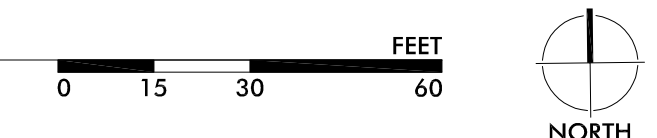
PLAN ENLARGEMENT 2/L200

PLAN ENLARGEMENT 1/L200

**LEGEND**

- PROPOSED TREE
- PROPOSED SHRUBS
- PLANT BED WITH MIX OF SHRUBS PERENNIALS, GRASSES AND GROUNDCOVER
- EXISTING TREES AND VEGETATION TO REMAIN
- RECREATION SPACE
- STREET LIGHT
- POLE MOUNTED FLOOD LIGHT
- WALL LIGHT

**01 LANDSCAPE PLAN**  
1"=30'-0"





Essex County, VA

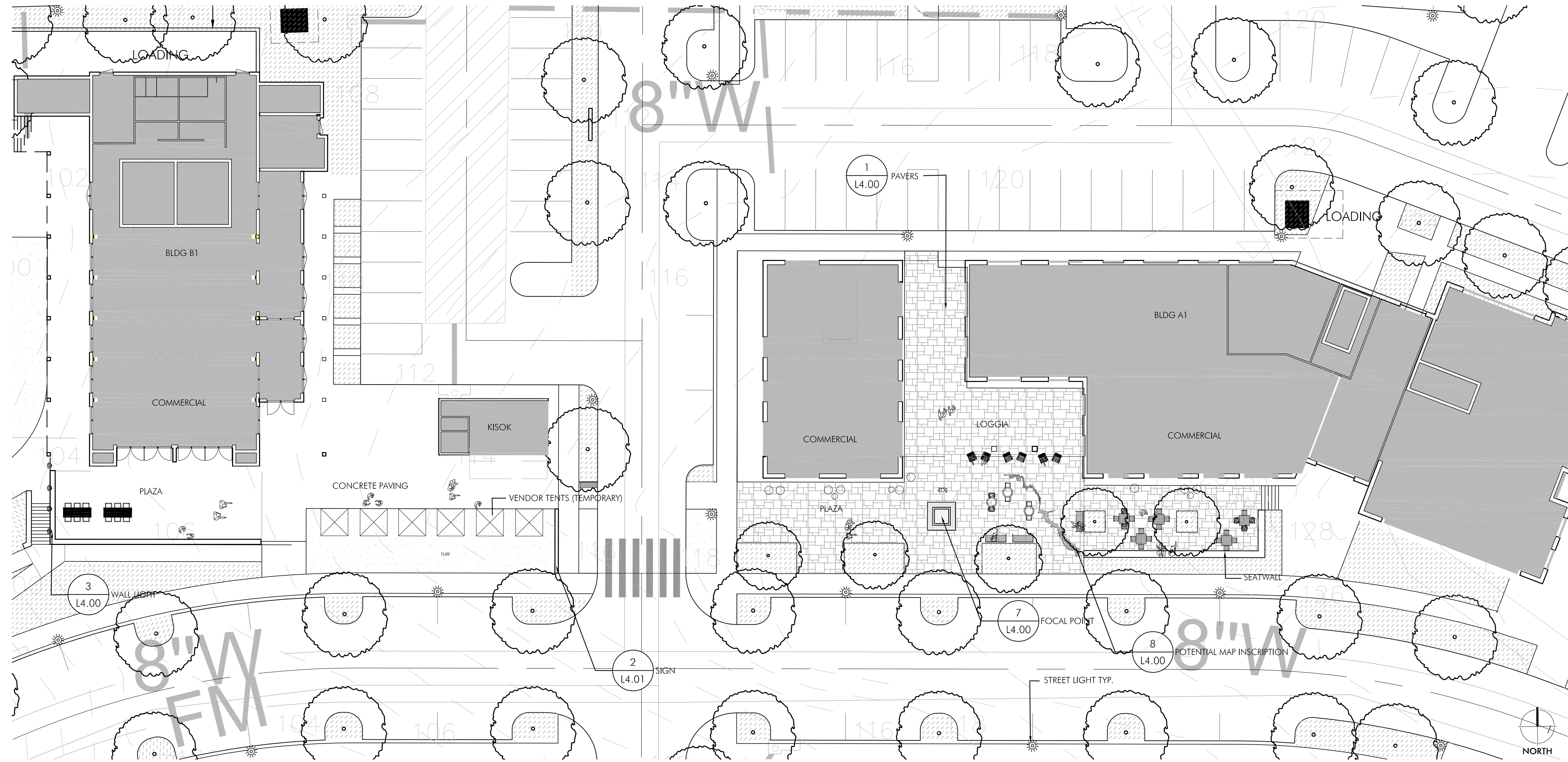
LANDSCAPE ARCHITECT  
**ParkerRodriguez**  
101 North Union Street, Suite 320  
Alexandria VA 22314  
703.548.5010

OWNER  
7 and M Development, LLC  
23263 Tidewater Trail  
Tappahannock, VA 22560

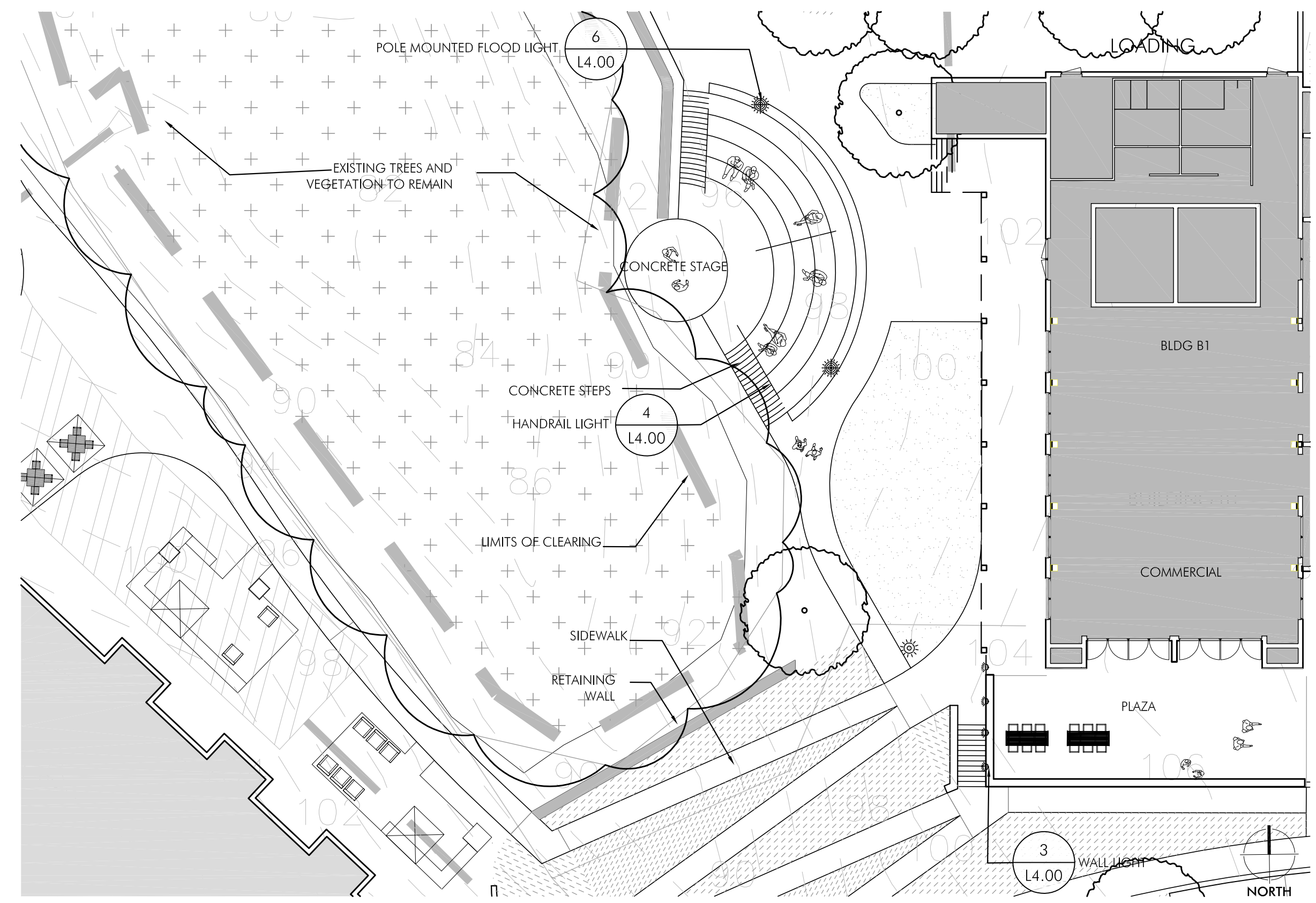
ARCHITECT  
MEASURE ARCHITECTS  
4000 Turbow Rd., NW Suite 922  
Washington DC 20007  
202.810.4281

ARCHITECT  
GTM  
7735 Old Georgetown Rd  
Bethesda, MD 20814

CIVIL ENGINEER  
Timmons Group  
1001 Boulders Parkway  
Richmond VA 23225  
804.200.6400



**01 PLAZA PLAN ENLARGEMENT**  
1"=20'-0"



**02 AMPHITHEATER PLAN**  
1"=20'-0"

DESIGNED BY  
DA  
DRAWN BY  
BC  
CHECKED BY

REVISIONS	
SITE PLAN SUBMISSION	12.30.2022
SITE PLAN RESUBMISSION	02.24.2023

LANDSCAPE  
PLAN  
ENLARGEMENT



Essex County, VA

LANDSCAPE ARCHITECT  
**ParkerRodriguez**

101 North Union Street, Suite 320  
Alexandria VA 22314  
703.548.5010

OWNER

7 and M Development, LLC  
23263 Tidewater Trail  
Tappahannock, VA 22560

ARCHITECT

MEASURE ARCHITECTS  
4000 Turlow Rd., NW, Suite 922  
Washington DC 20007  
202.810.4281

ARCHITECT

GTM  
7735 Old Georgetown Rd  
Bethesda, MD 20814

CIVIL ENGINEER

Timmons Group  
1001 Boulders Parkway  
Richmond VA 23225  
804.200.6400

DESIGNED BY

DA

DRAWN BY

BC

CHECKED BY

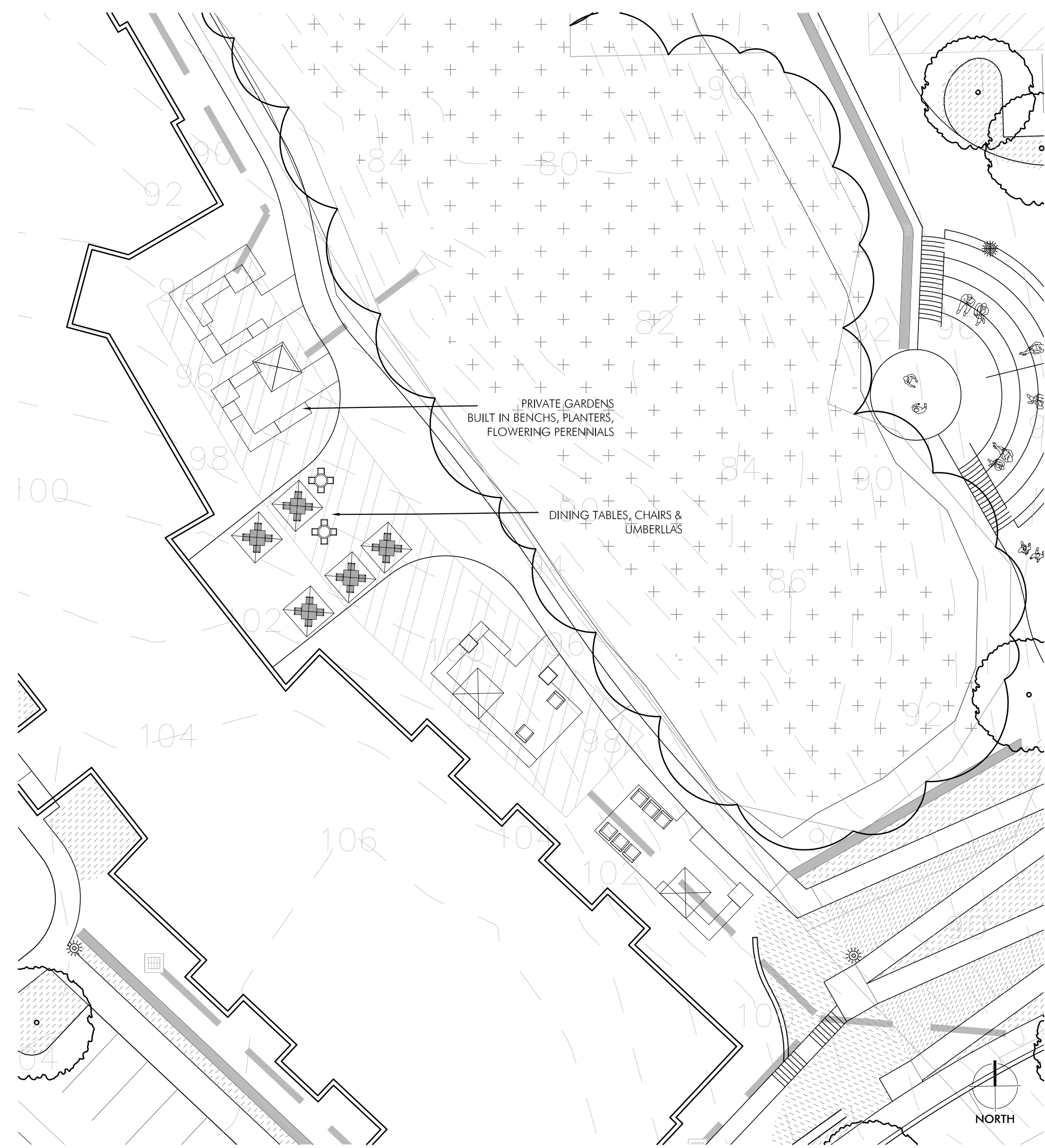
REVISIONS

SITE PLAN SUBMISSION 12.30.2022

SITE PLAN RESUBMISSION 02.24.2023

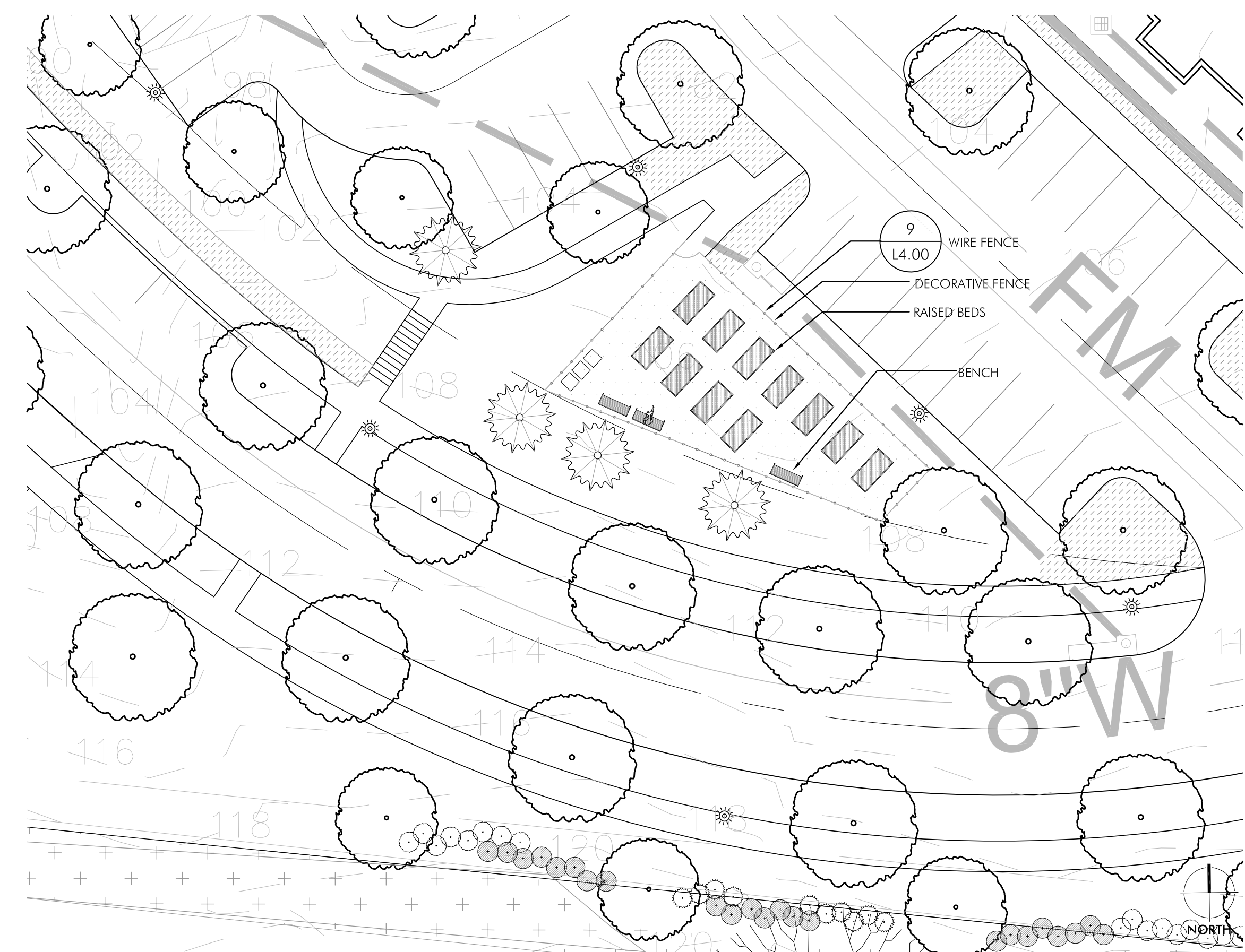
LANDSCAPE  
PLAN  
ENLARGEMENT

L201



**01 PRIVATE GARDENS**  
1"=10'-0"

0 5 10 20  
FEET



**02 COMMUNITY GARDENS**  
1"=10'-0"

0 5 10 20  
FEET









**01** BLUESTONE PAVERS  
NOT TO SCALE



OPTION A

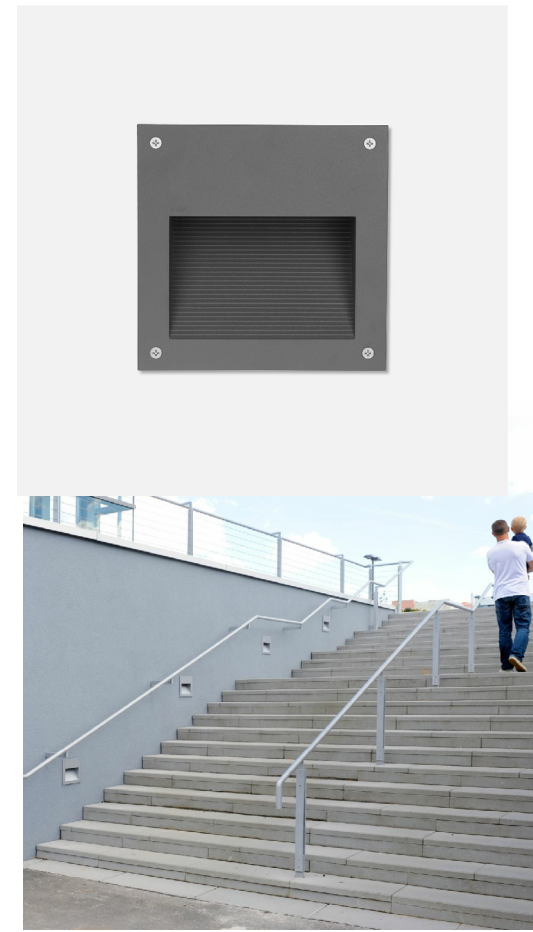


OPTION B



OPTION C

**02** STREETLIGHT CONCEPTS  
NOT TO SCALE



**03** WALL LIGHT  
NOT TO SCALE



**04** HANDRAIL LIGHT  
NOT TO SCALE



**05** EX TREE UPLIGHT  
NOT TO SCALE



**06** POLE MOUNTED EVENT LIGHT  
NOT TO SCALE



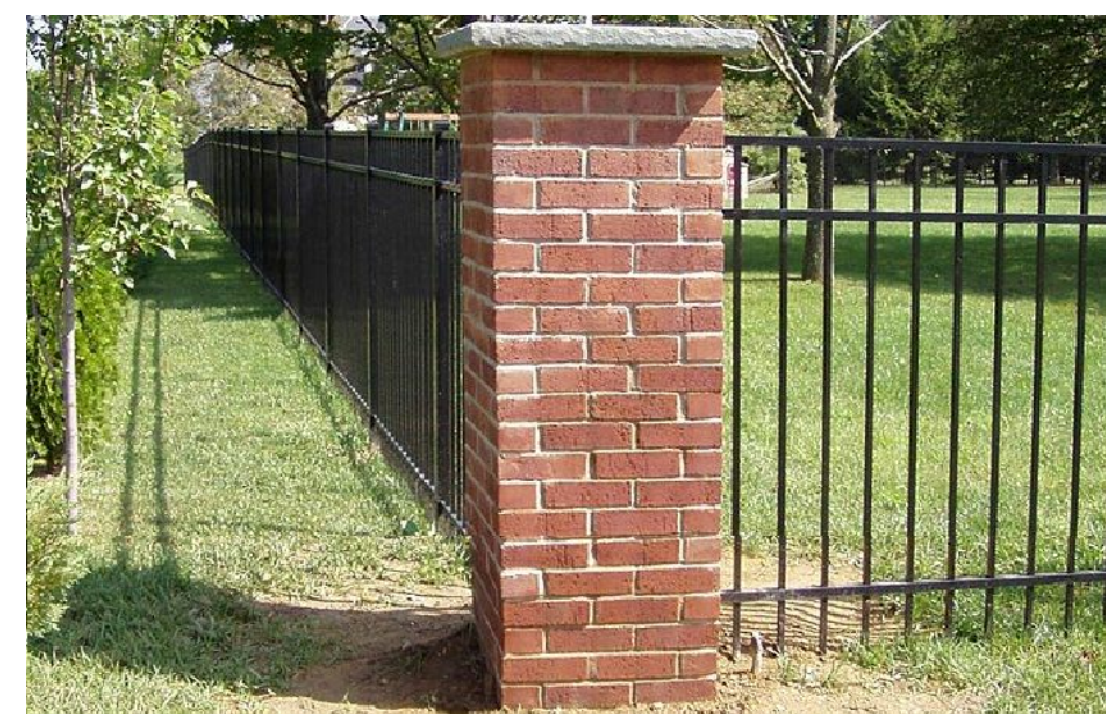
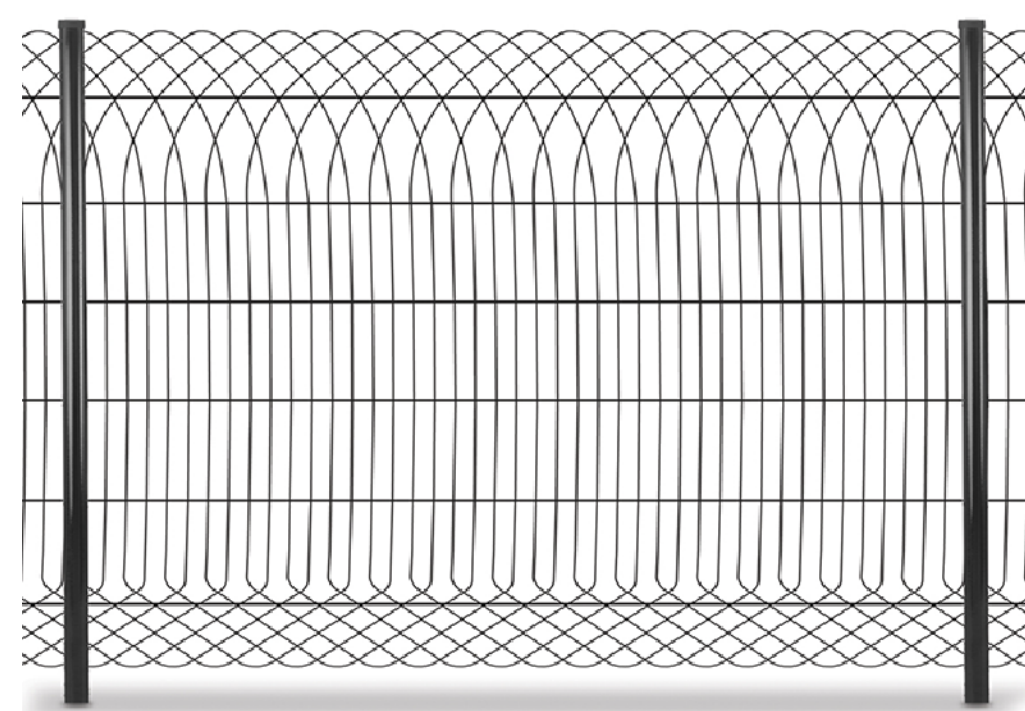
**07** FOCAL POINT CONCEPT - SCULPTURE OR FOUNTAIN TBD  
NOT TO SCALE



**8** TAPPAHANNOCK FEATURE MAP CONCEPT FOR PLAZA  
NOT TO SCALE



**09** WIRE FENCE AT GARDEN  
NOT TO SCALE



**10** BRICK PIER WITH METAL FENCE AT FAMILY CEMETERY  
NOT TO SCALE



IMAGES ARE CONCEPTUAL AND MAY NOT REPRESENT FINAL MATERIALS

**ESSEX POINT AT MT CLEMENT**

Essex County, VA  
LANDSCAPE ARCHITECT  
**ParkerRodriguez**  
101 North Union Street, Suite 320  
Alexandria VA 22314  
703.548.5010

OWNER  
7 and M Development, LLC  
23263 Tidewater Trail  
Tappahannock, VA 22560

ARCHITECT  
MEASURE ARCHITECTS  
4000 Turlow Rd., NW Suite 922  
Washington DC 20007  
202.810.4281

ARCHITECT  
GTM  
7735 Old Georgetown Rd  
Bethesda, MD 20814

CIVIL ENGINEER  
Timmons Group  
1001 Boulders Parkway  
Richmond VA 23225  
804.200.6400

DESIGNED BY  
DA  
DRAWN BY  
BC  
CHECKED BY

REVISIONS

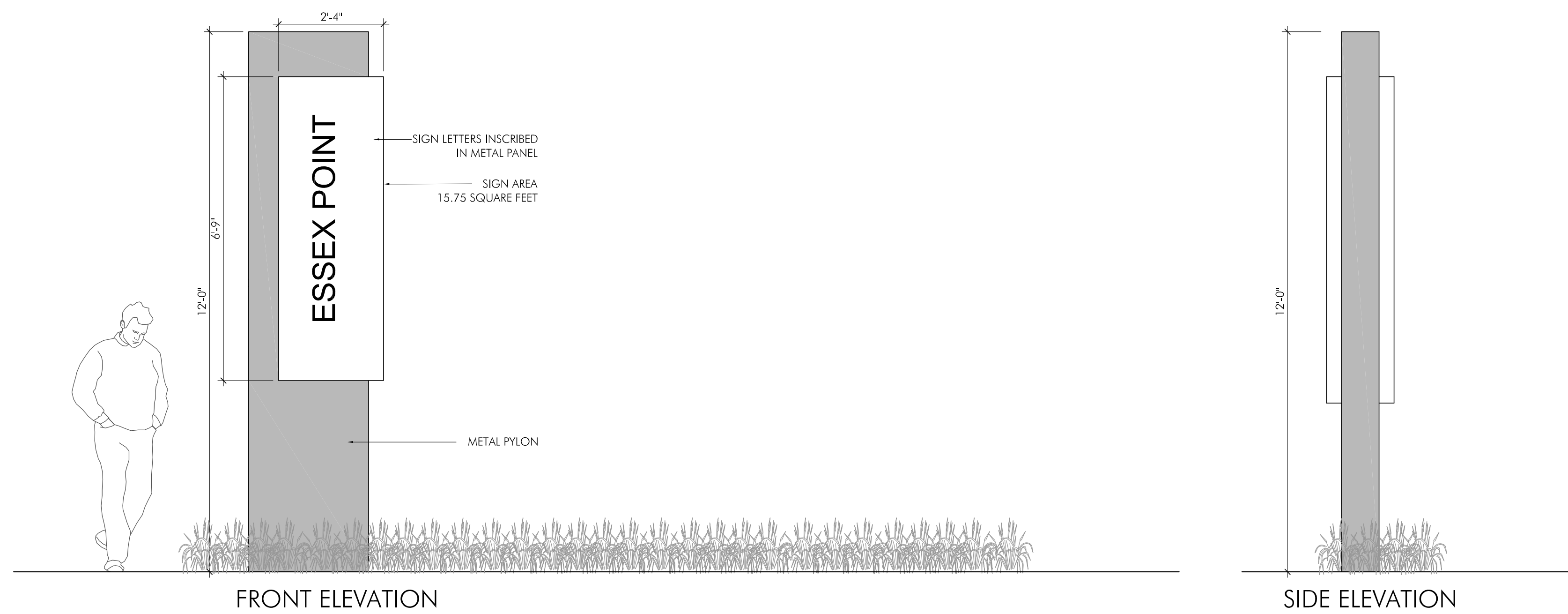
SITE PLAN SUBMISSION 12.30.2022

SITE PLAN RESUBMISSION 02.24.2023

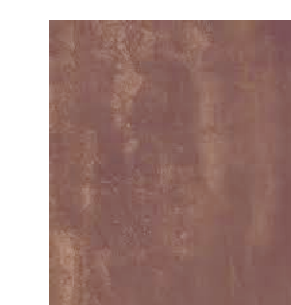
NO.	DESCRIPTION	DATE

**LANDSCAPE PLAN**





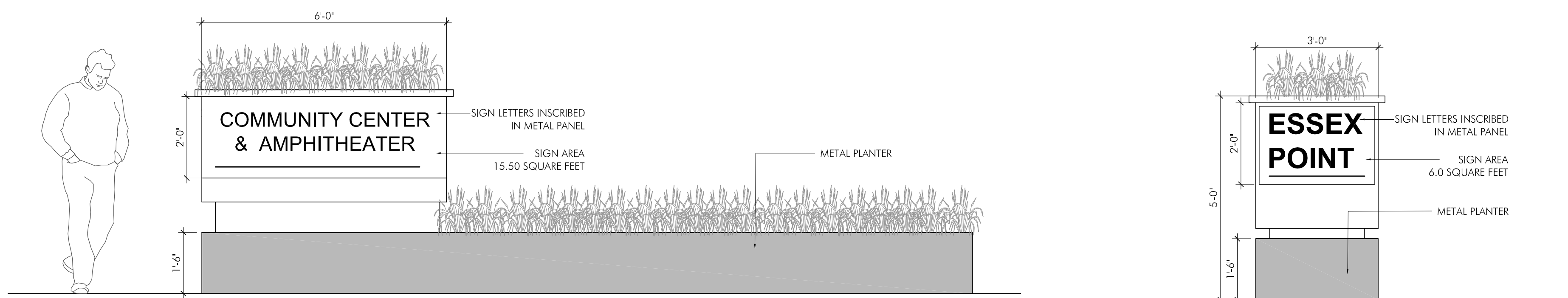
**01 PYLON SIGN CONCEPT**  
1/2"=1'-0"



CORTEN STEEL

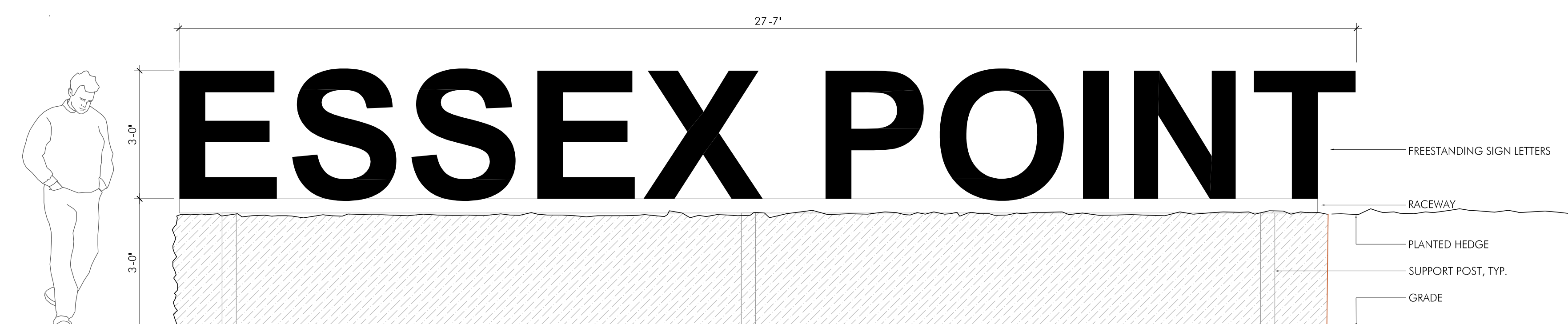
**05 PYLON SIGN CONCEPT IMAGERY**  
NOT TO SCALE

NOTE: SIGNAGE IS NOT FINAL. DRAWINGS ARE PROVIDED TO INDICATE FORM AND AREA



**02 FRONT ELEVATION OF COMMUNITY CENTER SIGN**  
1/2"=1'-0"

**03 SIDE ELEVATION OF MINOR SIGN**  
1/2"=1'-0"



**04 ENTRY SIGN CONCEPT**  
1/2"=1'-0"



**06 ENTRY SIGN CONCEPT**  
NOT TO SCALE

**ESSEX POINT AT MT CLEMENT**

Essex County, VA

LANDSCAPE ARCHITECT  
**ParkerRodriguez**

101 North Union Street, Suite 320  
Alexandria VA 22314  
703.548.5010

OWNER  
7 and M Development, LLC  
23263 Tidewater Trail  
Tappahannock, VA 22560

ARCHITECT  
MEASURE ARCHITECTS  
4000 Turlow Rd., NW Suite 922  
Washington DC 20007  
202.810.4281

ARCHITECT  
GTM  
7735 Old Georgetown Rd  
Bethesda, MD 20814

CIVIL ENGINEER  
Timmons Group  
1001 Boulders Parkway  
Richmond VA 23225  
804.200.6400

DESIGNED BY  
DA  
DRAWN BY  
BC  
CHECKED BY

REVISIONS

SITE PLAN SUBMISSION 12.30.2022  
SITE PLAN RESUBMISSION 02.24.2023

SIGNAGE

L401