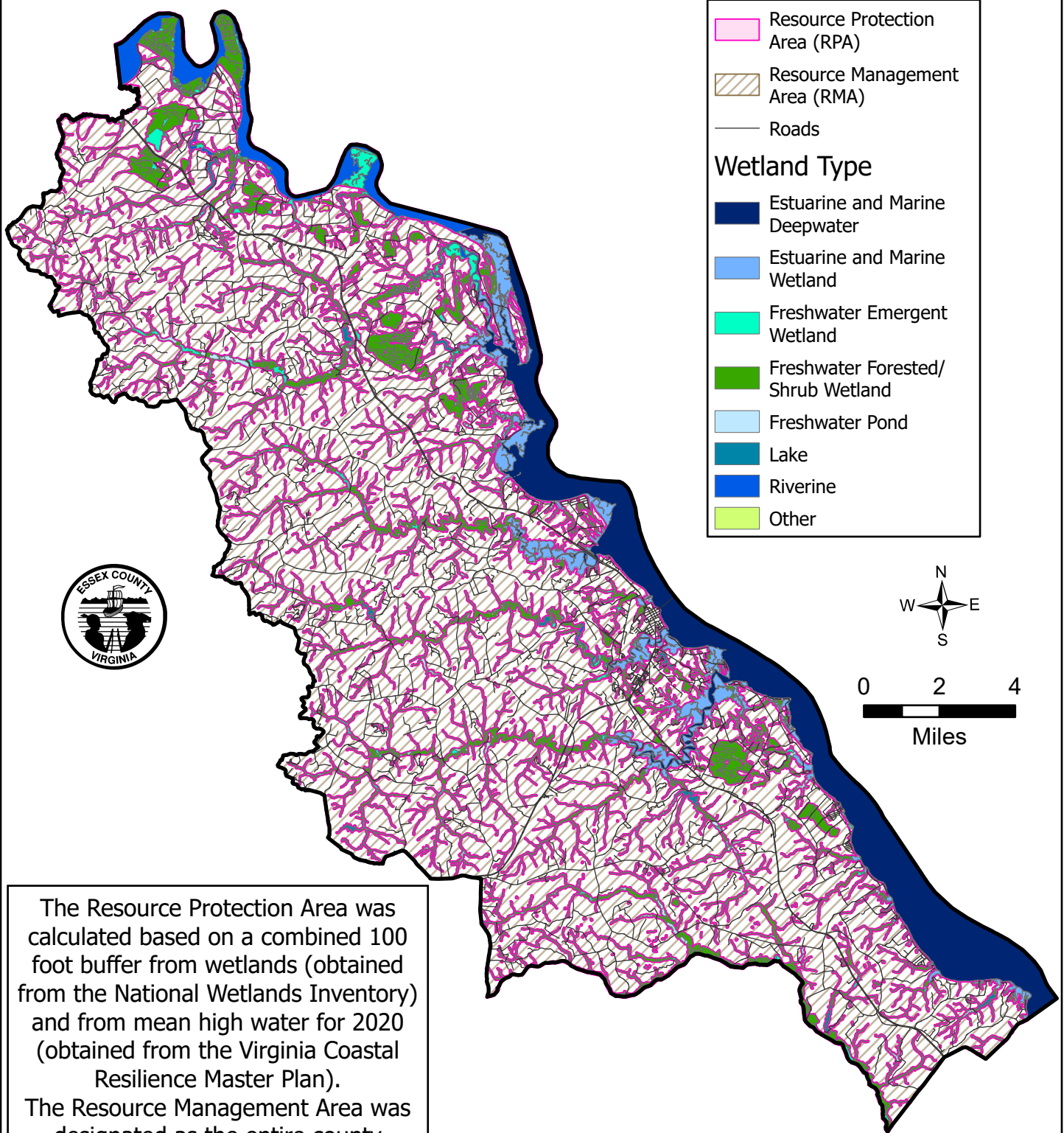


# Chesapeake Bay Preservation Areas in Essex County, VA



The Resource Protection Area was calculated based on a combined 100 foot buffer from wetlands (obtained from the National Wetlands Inventory) and from mean high water for 2020 (obtained from the Virginia Coastal Resilience Master Plan).

The Resource Management Area was designated as the entire county outside the RPA based on the Essex County Comprehensive Plan approved July 14, 2015 (pages 42-43).

Prepared by the Essex County GIS Department  
March 13, 2024